



Weepah Spring Wilderness

Bureau of Land Management

Ely Office
(775) 289-1800
HC Box 33500
Ely, NV 89301

www.blm.gov/nv/st/en/fo/ely_field_office.html

Caliente Office
(775) 726-8100
P.O. Box 237
Caliente, NV 89008

Size: 51,480 acres

Elevation: 4,600 - 8,605 feet

Designation: Lincoln County Conservation, Recreation and Development Act (2004)

Directions

The Weepah Spring Wilderness is located in the Seaman Range of northwestern Lincoln County. It is approximately 90 miles south of Ely and 35 miles north of Alamo. To access this Wilderness area head north on State Highway 318 from Hiko for approximately 25 miles. As you wind through the White River Narrows, the wilderness area is on the west side of the highway.



Area Description

The Weepah Spring Wilderness is an excellent, unspoiled example of mountain ranges typical of the Great Basin. The complex geology of the area forms a complicated landscape: isolated peaks, wandering canyons, walls of fossil bearing rocks, natural arches and volcanic hoodoos. Add to this the oddity of the largest stand of ponderosa pine in eastern Nevada and 4,000 year old rock art. Skull Arch (shown above) lies on the eastern side of the wilderness.

A rugged land, the Seaman Range and Timber Mountain consist of individual peaks and a myriad of canyons sloping off the higher ground. Hiking, camping, backpacking, hunting and horseback riding are good in this area of forest and eroded volcanic cliffs. Although most stands of ponderosa in eastern Nevada are relic stands, this one is unique because active regeneration is obvious. You can encounter young saplings growing next to trees over three feet in diameter. Remember that cutting or removing vegetation is not permitted. Gathering wood for campfires, when permitted, is limited to dead and down material.

The White River Narrows Archaeological District, listed on the National Register of Historic Places, represents one of the largest and most well-known petroglyph concentrations in the state. Other prehistoric sites include shelter caves, hunting blinds and prehistoric campsites.

Recreational Opportunities

The Weepah Springs Wilderness Area provides excellent opportunities for solitude amongst the forested slopes or in one of the many meandering washes and canyons. Recreational pursuits include camping, hiking, backpacking, hunting and horsebackriding. If carrying feed for horseback riding, it needs to be certified weed free. Hunting and non-commercial trapping are allowed under state and local laws within the wilderness area. Remember when camping that it is limited to 14 days and campsites are primitive. Please help preserve Nevada's fragile environments, park your vehicle and set up camp in previously used sites. Impact to the area can be minimized by practicing Leave No Trace ethics.

Mechanized and motorized vehicles are NOT PERMITTED in a wilderness area.

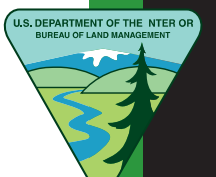
Additional Information

- Signs indicating "Wilderness" and "Closed Road" or "Closed Route" are placed at various intervals. Obey all posted signs.
- Vehicles can be parked outside the wilderness boundary.
- Pets are allowed, but please keep your pets under control at all times.
- Removal, disturbance, or attempting to remove archaeological materials is a felony.
- Contact Ely or Caliente Offices for current road conditions and hazards.

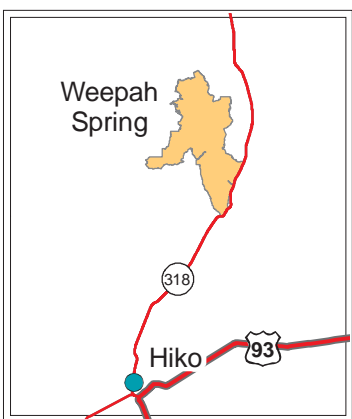
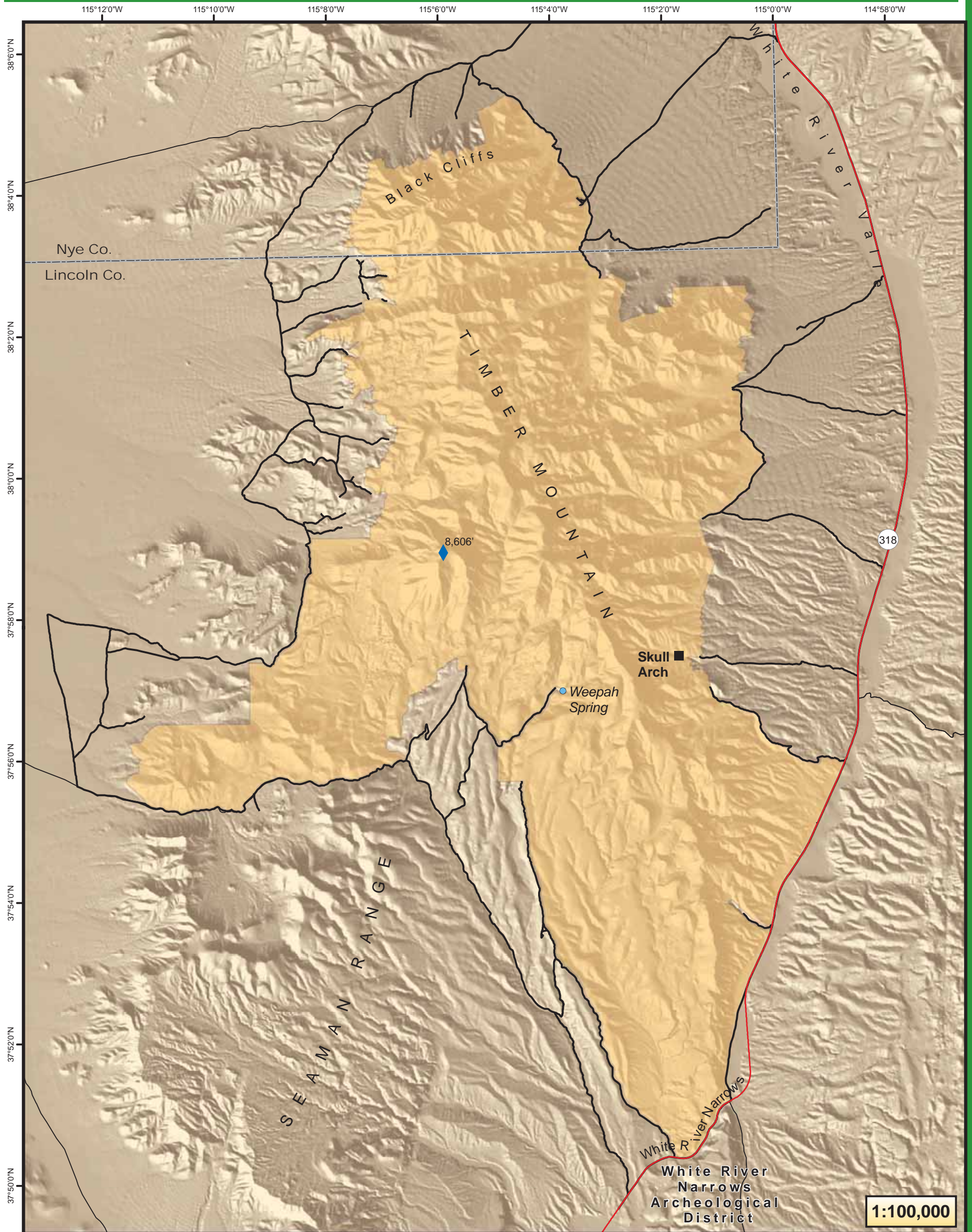


Maps

USGS 7.5 Quadrangle Maps: Timber Mountain Pass, Timber Mountain Pass East, Oreana Spring, and Weepah Spring
BLM 1:100,000 Maps: Quinn Canyon, Timpahute Range, and Caliente



Weepah Springs Wilderness Area



Legend

- City
- ◆ High Point in Wilderness
- Route: 4WD or better
- Route: ATV
- Wilderness Area
- Land Managed by BLM
- Private Land



No warranty is made by the Bureau of Land Management as to the accuracy, reliability, or completeness of these data for individual use or aggregate use with other data.

Quinn Cyn 1:100,000 Timber Mountain Pass West	Timber Mountain Pass East	Wilson Ck Range 1:100,000 Silver King Mountain SW
Oreana Spring	Weepah Spring	Deadman Spring
1:24,000 Maps		
Timpahute Range 1:100,000	White River Narrows	Caliente 1:100,000